



**Canadian Pastry Chefs Guild Inc.**  
 36 Melrose Avenue, Barrie, Ontario L4M 2A7  
 Telephone/Fax: 705-719-9654 - Cell: 705-794-1775  
 web: www.canadianpastrychefsguild.ca  
 hot line: Mark Floerke: 905-819-7007  
 e-mail: can-pc-guild@cogeco.ca

**ORDER FORM**

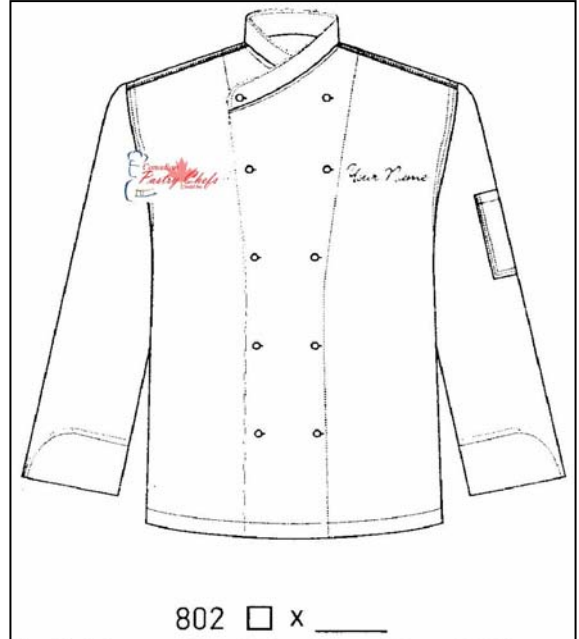
*Please use separate form for each or style of jacket. Thank You!*



801  x \_\_\_\_\_

*Black Buttons & Black Trim*

**EUROPA Chef Coat** Superior quality of 65% polyester and 35% cotton twill blend with an easy care finish for better wear, reversible closure, twin needle stitching, divided thermometer pocket on left sleeve, 10 black European stud buttons, under arm vents, black trim.



802  x \_\_\_\_\_

*White Buttons & White Trim*

**MONTE CARLO Chef Coat** Superior quality of 65% polyester and 35% cotton twill blend with an easy care finish for better wear, reversible closure, twin needle stitching, divided thermometer pocket on left sleeve, 10 white European stud buttons, under arm vents, pure white.

Size: (Men's chest sizes 36 – 52) \_\_\_\_\_

**Embroidery:**

Logo – Canadian Pastry Chefs Guild Inc. *plus Your Name (please print clearly below)*

YOUR NAME: \_\_\_\_\_

**\$60.00** with embroidery included (logo – Canadian Pastry Chefs Guild Inc and Your Name). Also includes GST and PST

**Payment Method**

Cheque Included

Visa

Chq #: \_\_\_\_\_

Card #: \_\_\_\_\_

Expiry Date (mm/yy): \_\_\_\_ / \_\_\_\_

Signature: \_\_\_\_\_

*Sorry – We cannot accept COD orders at this time.  
 For questions and details contact Al Criminisi at Lentia: 905-625-2804*