



Canadian Pastry Chefs Guild Inc.

36 Melrose Avenue, Barrie, Ontario L4M 2A7
 telephone/fax: 705-719-9654 705-794-1775 cell
 web: www.canadianpastrychefsguild.ca
 hot line: Mark Floerke: 905-819-7007
 e-mail: can-pc-guild@cogeco.ca

ORDER FORM



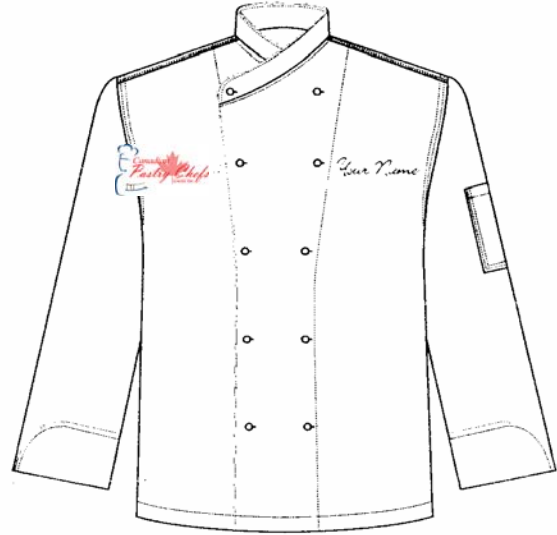
801 x _____

Circle Size: S M L XL XXL

Note: These are standardised as 'Men's' sizes.

EUROPA Chef Coat

Superior quality of 65% polyester and 35% cotton twill blend with an easy care finish for better wear, reversible closure, twin needle stitching, divided thermometer pocket on left sleeve, 10 black European stud buttons, under arm vents.



802 x _____

Circle Size: S M L XL XXL

Note: These are standardised as 'Men's' sizes.

MONTE CARLO Chef Coat

Superior quality of 65% polyester and 35% cotton twill blend with an easy care finish for better wear, reversible closure, twin needle stitching, divided thermometer pocket on left sleeve, 10 white European stud buttons, under arm vents, pure white.

Embroidery:

Logo – Canadian Pastry Chefs Guild Inc. *plus* Your Name (print clearly below)

Name:

\$60.00 with embroidery included (logo – Canadian Pastry Chefs Guild and name). Also includes GST.

Payment Method: Cheque Included

Chq #: _____

Visa

Card #: _____

Signature: _____

Expiry Date: _____

Sorry
We cannot accept COD orders at this time.
 Questions? Contact Al Criminisi: 905-625-2804